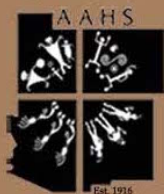


AAHS



Arizona Archaeological & Historical Society



www.az-arch-and-hist.org
bitly.com/aahsyoutube

https://www.facebook.com/ArchandHist
AAHS is a non-profit organization: 501c(3)



Founded in 1916, The Arizona Archaeological and Historical Society (AAHS) is a non-profit, educational organization affiliated with Tucson's **Arizona State Museum**

We bring professional and avocational archaeologists and the general public together to explore and understand the archaeology, history, and anthropology of the southwestern United States and northwestern Mexico.

Our objectives include-

- * Scholarly pursuits including our journal *Kiva*.
- * Protection and preservation of archaeological and historic sites.
- * Educational opportunities through lectures, field trips, volunteer opportunities, oral history videos, conference information, and K-12 youth activities.
- * Support for the Arizona State Museum through twice yearly book sales.



Arizona State Museum

Ready To Explore The Southwest

Johnny Ward Ranch

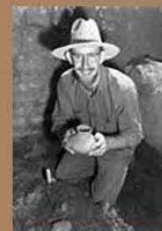


Photo by: Hiram Parent



Guevavi Mission

Emil Haury maps location of Clovis points



Ray Thompson Point of Pines

Photo by: E.B. Sayles

Send Membership Form to:
Vice President for Membership
Arizona Archaeological and Historical Society
Arizona State Museum
University of Arizona
Tucson, AZ 85721-0026

Attach Postage

EXPLORE

EDUCATION

MEMBERSHIP

JOIN



Snake Gulch - Arizona

SUPPORTING THE FUTURE

As part of **AAHS**, we as members support the **education** of future generations while developing a deeper **respect** for southwestern cultural heritage.

AAHS sponsors **monthly presentations** on current archaeological and anthropological topics with specialists in their field of work. These presentations help us further **understand** this vast area of southwestern cultures.



TEACHERS

K-12 educators may receive grants for Orrell Curriculum Development related to archaeology, history, or anthropology of the American Southwest. Funding is also available for school field trips to the Arizona State Museum.

See our website for more details
www.az-arch-and-hist.org

JOIN AAHS TODAY

Membership is open to all persons who are interested in the archaeology, anthropology, and the history of the SW/NW and who support the objectives of the Society. Members may not engage in activities that are contrary to these objectives. For details go to www.az-arch-and-hist.org

CONNECT

To Our Archaeological Community

- * Monthly **GLYPHS** newsletter with news and research on SW/NW archaeology, anthropology, and history.
- * Monthly public presentations on SW/NW archaeology, anthropology, and history.
- * AAHS field trips to unforgettable archaeological sites and museums.
- * Sales of used archaeology, anthropology, and history books.
- * Research and travel grants to support original research.
- * Access to our scholarly journal *KIVA*.
- * Subscribe to JSTOR at half price.

Yes! I want to make a difference

Each membership runs for a full year from the date your membership is received. Good for all members of household.

Name: _____

Address: _____

City: _____

State: _____ Zip: _____

Phone: _____

Email: _____

Membership Categories (select one)

- \$60 KIVA-members receive 4 issues of KIVA and 12 issues GLYPHS newsletter
 - \$70 International KIVA members receive 4 issues of KIVA & 12 issues of GLYPHS.
 - \$45 GLYPHS members receive 12 issues of GLYPHS.
 - \$35 STUDENT members receive both KIVA and GLYPHS.
 - \$100 CONTRIBUTING members receive both KIVA and GLYPHS.
 - \$150 SUPPORTING members receive both KIVA and GLYPHS.
 - \$300 SPONSORING members receive both KIVA and GLYPHS.
 - \$1500 LIFETIME members receive both KIVA and GLYPHS.
- I wish to receive GLYPHS (circle one)
*by Email *by Mail *Both
I'm interested in volunteering in AAHS activities: **Yes** **No Thanks**



Mummy Cave - Canyon de Chelly



3 Rivers - New Mexico